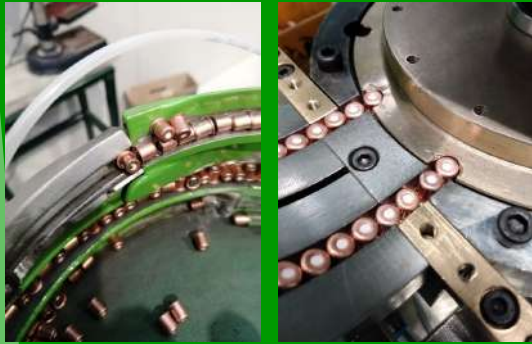


CYCLOS

PRIMING MACHINE



 **ELETTROTECNICA
INDUSTRIALE**

MACHINES FOR SHOTSHELL CARTRIDGE

25020 FLERO (BRESCIA) - Italy

Via L. Pirandello 27

Tel. +39 3487859324

Tel. +39 3394329220

Email: imelettrotecnica@hotmail.com

www.imelettrotecnica.com



**ELETTROTECNICA
INDUSTRIALE**

MACHINES FOR SHOTSHELL CARTRIDGE

CYCLOS
PRIMING MACHINE

CYCLOS

- **CYCLOS is the new LM ELETTRONICA machine, for inserting and skyving and thanks to its innovative systems, it can reach an hourly production of 10.000 pcs.**
- **After this operation is possible feed with a cartridge-cases the PROXIMA or ELEKTRA machine.**
- **Each phase of CYCLOS is automatically controlled by analog sensor and photocells, which monitor every operation of the machine.**
- **A touch screen panel, allows you to control every parameter of the machine, functionality and anomalies. It has the possibility to set up and verify a series of ALPHA utilities.**
- **It has a lubrication system, grease for moving parts.**
- **All the electrical and pneumatic components used on ROTEX are of the highest quality.**
- **Hourly production: 10000 pz/h**
- **Dimension: Dimensions :Lengthh 1000mm / Width 840 mm / Hight 2150 mm**
- **Weight: 1100 kg**
- **Installed power: 3 Kw—standard 360V/420V 50 Hz three-phase +N + T (Different voltages and frequencies are available on request)**
- **Air: 650/700 nl/min**

